

# WHY YOU SHOULD SUPPORT THE FITZWILLIAM NINE.

## WHO ARE THE NINE?

At 10.45 pm on July 9th, police in riot gear stormed into the Fitzwilliam Hotel in the mining village of Fitzwilliam. A miner described what happened leading up to the attack:

Shortly after 5 pm, eight policemen went to arrest a local striking miner at his home. He wouldn't let them in without a warrant, so they left to get one. The miner left his house and within half an hour 200 people had blocked off the street. After waiting for an hour, with no sign of the police, the crowd moved on to Hemsworth police station to protest. An N.U.M. official went in as spokesman, and was assured that there would be no further harassment of the miner, and that he could be accompanied by a solicitor if he went to the police station. But afterwards police began driving up and down the street shouting "We're coming for you... We're going to get you." I went to the Fitzwilliam Hotel where local people had gathered. At 10.45 pm 90 police from West Yorkshire stormed into the pub hitting people with their truncheons. The lads started fighting back, but the police forced everyone out of the pub and down a side street. Then the riot police came out and it was just like Orgreave. People were beaten, arrested, and handcuffed to lampposts back to back. People who would never have dreamed of fighting were having a go, because they were scared and terrified.

NINE PEOPLE WERE ARRESTED AND CHARGED WITH BREACH OF THE PEACE AND SUBJECTED TO A 7:00 PM TO 7:00 AM CURFEW.

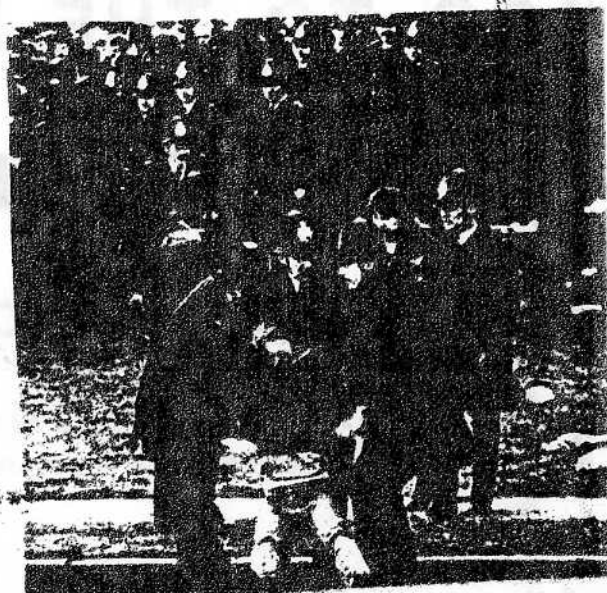
THE LABOUR MOVEMENT MUST OPPOSE ALL ATTEMPTS TO CRIMINALISE THE STRIKING MINERS. WE MUST MOBILISE SUPPORT FOR THOSE ARRESTED AND CALL FOR THE DROPPING OF ALL THE CHARGES.

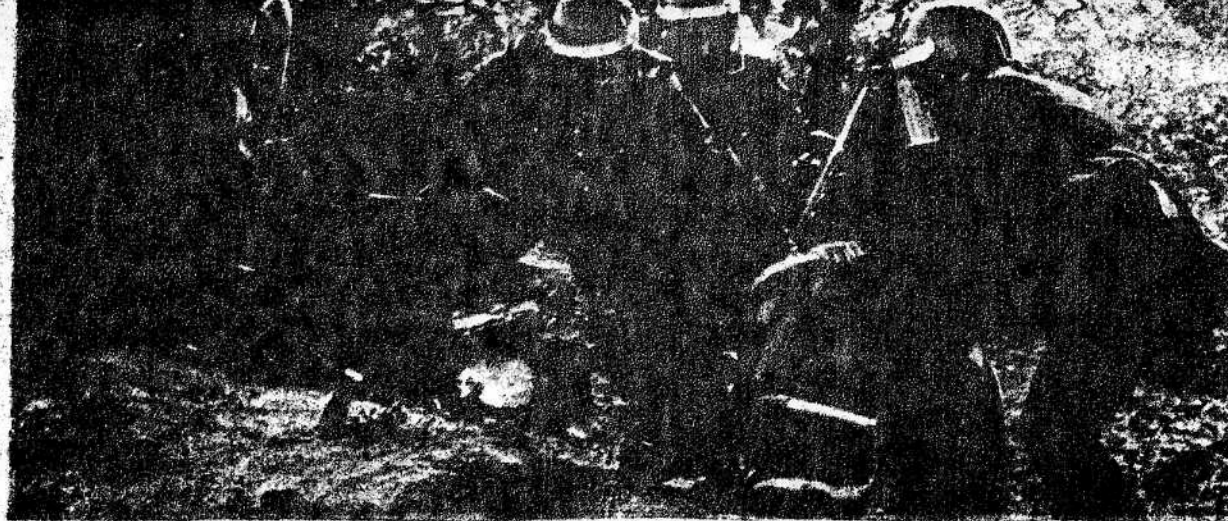
## MINING COMMUNITIES UNDER ATTACK

The Tories and their millionaire press claim that the miners are responsible for the violence and intimidation. Yet during the strike the police have rioted in villages throughout the Yorkshire coalfield: Fitzwilliam, Hemsworth, Rossington, Grimethorpe... the list is getting longer.

There is a simple explanation for this. Later in the winter the Tories will need to move coal from the pitheads, if they are to break the strike.

THE POLICE ARE BEING USED TO SOFTEN UP THE MINING COMMUNITIES BEFORE THE COAL LORRIES MOVE IN.





## **DON'T LET THE MINERS STAND ALONE**

### **WHAT YOU CAN DO**

#### **MINERS**

- RESOLUTIONS NEED TO BE PASSED IN ALL N.U.M. BRANCHES CALLING FOR FULL SUPPORT FOR THE FITZWILLIAM NINE.
- USE THIS LEAFLET ON THE PICKET LINE, AND IN YOUR FOOD KITCHENS AND WELFARES.
- MAKE SURE THE VANS GO STRAIGHT TO THE LOBBY AT CASTLEFORD COURT AFTER PICKETING ON DECEMBER 3RD.

#### **OTHER WORKERS**

- PASS RESOLUTIONS IN YOUR TRADE UNION BRANCH, TRADES COUNCIL, MINERS SUPPORT GROUP OR LABOUR WARD IN SUPPORT OF THE NINE.
- INVITE A SPEAKER TO YOUR MEETING OR WORKPLACE TO EXPLAIN OUR CASE.
- STEP UP THE COLLECTIONS AND VISIT THE MINING VILLAGES ... SEE WHAT'S HAPPENING FOR YOURSELF.

**GO TO THE RALLY** 9.30 AT COURT  
OSGOLDCROSS  
**JOIN THE LOBBY** CASTLEFORD  
AFTER LOBBY IN CAS. TRADES CLUB  
N.U.M. AND LABOUR MOVEMENT SPEAKERS