

1984

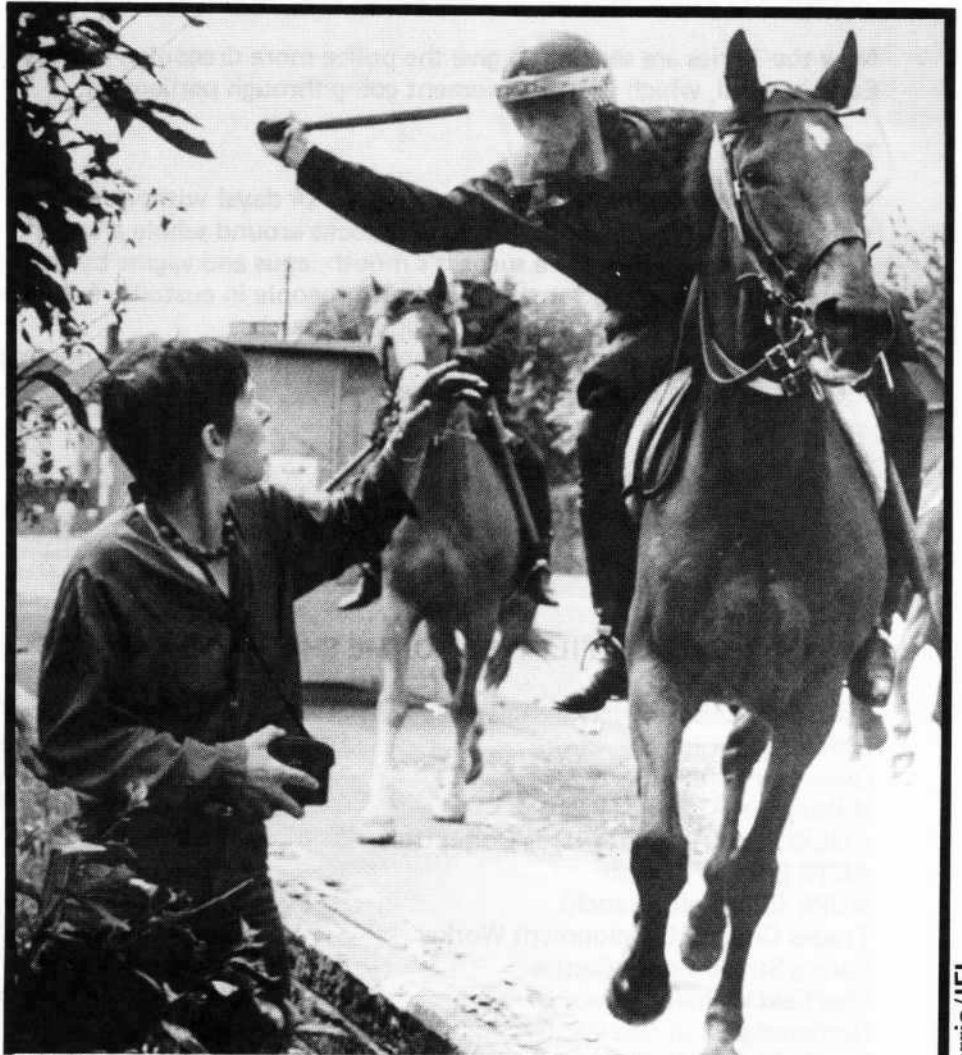
THE SHEFFIELD CAMPAIGN AGAINST THE POLICE BILL

**MARCH
+
RALLY
& ENTERTAINMENT**

JULY 21st

LEAVES 11 O'CLOCK

**ABBEYFIELD PARK
TO CITY HALL**



ORGREAVE: As a woman from a Sheffield support group calls for an ambulance for an injured miner, a mounted policeman tries to chop her down....

John Harris/IFL

**SPEAKERS FROM SHEFFIELD CITY COUNCIL.
NUM. GREENHAM WOMEN.
SHEFFIELD CAMPAIGN
AGAINST RACISM. LABOUR
CAMPAIGN FOR GAY RIGHTS.
NCAPB. LABOUR PARTY.
& MORE**

SPONSORED BY

Sheffield NALGO* Sheffield Troops Out*

Sheffield Campaign Against Racism*

Labour Party Young Socialists* Sheffield Anti-Nuclear Campaign*

STOP THE POLICE STATE

The disgraceful scenes of police brutality at Orgreave coke works, led by specially trained riot squads from London, have sickened millions of workers. The miners have been continuously harassed by the police during their dispute over pit closures, with over 3,000 arrested so far. In the words of Dennis Skinner MP, Thatcher is turning the police into her 'private army' in an attempt to smash the NUM.

Now the Tories are seeking to give the police more draconian powers through the Police and Criminal Evidence Bill, which is at the moment going through parliament.

This Bill will include:

- police powers to hold people for 96 hours (4 days) without charge
- police powers to set up random roadblocks around whole areas and to search everything that moves
- police powers to search a suspect's mouth, anus and vagina by force
- police powers to use force to fingerprint people in custody, even 10-year-old children
- new and wider police powers to stop and search
- new police powers to seize confidential information held by doctors, lawyers, priests, journalists, social workers and political organisers.

OTHER GROUPS AFFILIATED TO THE SHEFFIELD CAMPAIGN AGAINST THE POLICE BILL

Broomhill Labour Party
Drew Labour Party
Owlerton Labour Party
Hillsborough Labour Party
AUEW Joint Shop Stewards Committee
ACTS 9/21, 4 Branch
NUPE (Sheffield Branch)
Trades Council Development Worker
Spring Street Youth Centre
Sheffield Women's Peace Camp
Netheredge Anti-Nuclear Group
Sheffield Anti-Nuclear Campaign
Woodhouse & Darnall CND

Eccleshall Labour Party
South Wortley Labour Party
Walkley Labour Party
AUEW (Precious Metals Branch)
Neill Poole's Ltd
AUEW 41 Branch
ASTMS (Sheffield General Branch)
SHUSH Project, Mt Pleasant Community Centre
Woodhouse Youth Centre
Sheffield Unilateral Disarmament Society
Crooks & Waldey Anti-Nuclear Group
Grimesthorpe Anti-Nuclear Group
Firth Park Advice Centre

Sheffield Campaign Against Unemployment

If you are interested in further details of the campaign, contact:

SCAPB
73 West Street
Sheffield S1

or ring Sheffield (444377) 0742 if out of Sheffield.